

# stjohnsharborne

# Parish Profile

April 2024



“A Heart for God, our City and the Nations”



[www.stjohnsharborne.org](http://www.stjohnsharborne.org)

Registered charity number 1132862 (reg 2009)



THE CHURCH  
OF ENGLAND

Thank you for taking the time to consider whether you might be called to be our next Vicar







# Contents

page



	Page
<b>Welcome from the Church Wardens</b>	2
<b>Introduction to the area</b>	
• Birmingham	4
• Harborne	5
• The Parish of St John's	6
<b>About St John's Harborne</b>	
• Our DNA and history	8
• Key characteristics	9
• Services	10-11
• Ministries	12-16
• Outreach and mission	17
• Bridge-building ministries	18-19
• Global mission	20
• Revitalisation of St Mary's Bearwood	20
• Staff structure and our team	21-24
• Church buildings	25-26
• Safeguarding and Governance	27
<b>What is God's calling for St John's?</b>	
• Church Engagement 2024	29-30
• What might our future look like?	31
• Personal profile	32
• Summary	33
<b>Appendices</b>	
• <b>A:</b> Finance	35-36
• <b>B:</b> A history of St John's	37
• <b>C:</b> Church survey results	38-40

# Welcome

## from the Church Wardens

Hello and welcome to St John's Harborne Parish Profile!

We aim to capture the essence of our life as a church and give you a true sense of us. We hope you enjoy the read....



St John's Church Harborne is a large evangelical, charismatic church set in southwest Birmingham. We are committed to the teaching and authority of the Bible, and open to the renewing and restoring work of the Holy Spirit. With your enabling and encouragement, we would love to move deeper into these areas. We love worshipping Jesus and long to see more lives transformed by Him. We have a committed core multigenerational church family. We are also a place where people join us to worship on a more temporary basis, such as students or placement-based professionals. We rejoice in the increase in the diversity of our church family in recent years.

We are known locally for our church-based youth and children's provision, including our toddler ministry, as well as extensive work in the community amongst older people. We have a great volunteer base on which to build God's Kingdom. We are eager to ensure that 'good ideas,' often birthed from within the church family are fully in line with God's ideas for St John's and beyond.

St John's has 'A heart for God, our City and the Nations.' We are committed to supporting our mission partners, both at home and abroad, through prayer, finance and other practical ways.

We pray that as you read, sensing our heart and understanding our DNA, you would discern if God might be calling you to come and lead us.

Yours in Christ,

Phil Varley and Kate Collins (Church Wardens)





Introduction to

# The Area





# The City of Birmingham

One of the youngest cities in Europe - 44% of the population are under 30

Diverse - People from 187 nations call it home

Second biggest city in UK. Geographically central - soon to be linked by HS2

**Sport:**  
2022 Commonwealth Games, Edgbaston Cricket Ground, Multiple high level football teams etc.

We believe that people need our Saviour more than ever

More canals than Venice, and more parks than any other European city

**Culture:**  
Breadth of theatres, Royal Ballet Company, CBSO, Cadbury Factory etc.

Five universities and England's highest graduate retention rate after London

Significant upcoming challenges with Council Cuts and council tax rises...

Spiritually active and diverse - 70% of Birmingham residents profess a faith, however only 34% Christian

## The Village of

# Harborne



The Parish of St John the Baptist, Harborne Heath lies in the district of Harborne, a suburb three miles south-west of Birmingham's vibrant city centre. Harborne is considered an 'urban village' and has a strong sense of community and identity

The church is located on the High Street. This main shopping area has four supermarkets, independent shops, national chains, charity shops, estate agents and numerous cafés, pubs and restaurants.

Harborne is a desirable location to live, including those who work or study in the hospital and universities. Near the High Street are areas of Victorian and Edwardian terraces. Beyond these are the pre-World War One garden suburb of houses known as the Moor Pool Estate.

Harborne has two secondary schools, four primary schools, one special school and one independent school. There are two large parks, two golf courses and a swimming pool with a gym.



Local hospitals include the Queen Elizabeth (incorporating the Royal Centre for Defence Medicine), Birmingham Women's Hospital and the new private Harborne Hospital. Nearby universities include the University of Birmingham, Birmingham City University and Newman University, which admit students from across the world. The Botanical Gardens and Winterbourne Gardens offer a calm retreat from the busyness of urban life.

Harborne is relatively affluent and is not as ethnically diverse as Birmingham as a whole. There is a wide age range of residents. Education standards and employment rates are higher than the Birmingham average.

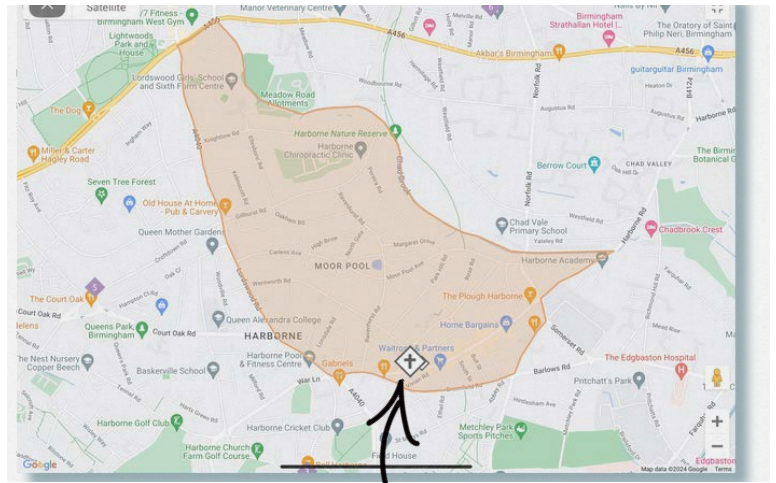




# The Parish

## of St John's

St John's Parish is one of three parishes in Harborne and is a narrow area covering 0.6 square miles, with a population of nearly 8000. It has a popular primary school, two secondary schools, a library, a police station and three large complexes of warden-controlled housing for older people. It is largely residential with no manufacturing industry.



\*Image taken from google maps and a churchnearyou.com

St John's

## St John's Parish Demographics

	Parish	Harborne	Birmingham	England
Population	7,547	23,000	1,144,900	55,980,000
Over 65s	14.0%	16.0%	13.1%	18.4%
Under 19s	21.0%	21.9%	27.0%	23.0%
White British	77.9%	60.9%	48.6%	81.0%
Christian	54.0%	45.3%	34.0%	46.2%

90% of St John's attendees live within 3 miles of the church, though many don't live in the parish



The electoral roll of the church was 325 in April 2023, but this is not indicative of the congregation size. We know we regularly reach a greater number than this.

St John's draws worshippers of Jesus from across Birmingham. Our challenge is to serve the local parish community and contribute to God's wider mission across the city.



About

# St John's Harborne





# St John's

# Our DNA and History

## “A Heart for God, our City and the Nations”

We are a Charismatic Evangelical church, part of the New Wine network and a member of the Evangelical Alliance, whose statement of faith we are glad to hold. Ministry in both Word and Spirit has been central to our life together. Our congregation is diverse in terms of evangelical spirituality, but retains a sense of togetherness.

### WORD:

We are committed to the authority and accuracy of scripture as the word of God. We value powerful Bible teaching that is culturally and contextually relevant.

### Triple helix of



### MISSION:

We are committed to sharing the good news of Jesus Christ locally, nationally and internationally.

### SPIRIT:

We are committed to experiencing more of the presence and power of the Holy Spirit today.

## A full history of St John's can be found in Appendix B

Despite challenges over the past few years, we have grown in togetherness and unity. In God's goodness, community has been strengthened, and we have seen many new people across all age ranges joining the church. As we look to the future there is a sense of excitement, hunger and expectation about the future God has for us under the leadership of the man or woman God will call here.



# St John's Our Key Characteristics

St John's is a church...

...that faithfully preaches the word of God

...that is multi-generational

...that embraces the renewing work of the Holy Spirit

...that is welcoming

...where people hear the call to mission, both overseas and locally

...that loves to worship God together

...that encourages personal growth and discipleship

...that offers pastoral care, particularly through small groups

...that gives generously in both time and money





# Services

## at St John's

All of our services involve worship, prayer and preaching God's word, and the expectation of God's presence. They are warm and welcoming, and there is a strong sense of community before, during and after the meetings. The flower arranging team keep the church looking beautiful.

### Welcome

We want St John's to display the welcoming love of Christ as soon as people walk through the door. Our Welcome Team greet all who come to St John's and engage with visitors and enquirers. Our church is accessible for worshippers with additional needs.

### Sunday 10am

#### Contemporary Morning Worship with Children's and Youth Groups

This is a vibrant and lively gathering for the whole church to encounter God as we worship Him together. It's attended by ~250-300 adults, children and young people. The first Sunday of the month is an All-Age service, on other weeks the children attend the initial part of the service, then move out into their own groups. We make time for the monthly sharing of testimonies, to encourage and uplift each other. We also celebrate Holy Communion once a month. This service is streamed on our YouTube channel:

<https://www.youtube.com/@StJohnsHarborne>.

### Sunday 6pm

#### Contemporary Evening Worship

Sunday evening is an informal gathering popular with all ages, but particularly with young people. There is space for all to encounter Jesus, and more time and space for Holy Spirit ministry. We celebrate Holy Communion once a month. Attendance is ~100 people.

### Thursday 10.30am

#### Midweek service

Our midweek service is provided for those who prefer a more reflective, traditional setting in which to worship. It is particularly suitable for older people, though everyone is welcome. There are once monthly opportunities to share Holy Communion, and also to share testimonies. Attendance is 80-90 and has seen significant growth.

Hello & Welcome



# Services

## at St John's

### Prayer Ministry

A small team of trained volunteers is available to pray with people after every service. At our Sunday communion services we offer prayer for healing with anointing with oil.

### Powerhouse

We believe in the transformative power of prayer. Powerhouse is our monthly midweek prayer gathering for the whole church community. Average attendance is around 40 people. It is where we revitalise our prayer life, with confidence that the Holy Spirit will meet with us in a powerful way as we bring the needs of the world and our church to God.

### Special Services

Christmas and Easter are joyful periods with many additional services, including two packed Christingle services on Christmas Eve, and a regular Ash Wednesday service. We also hold an annual Memorial Service.

### Weddings and Funerals

We held 19 funerals in 2023, many of which were led by our pastor for older people. In 2024 we look forward to celebrating two weddings. Most weddings are from within our church family.

### Baptism and Confirmation

We support and practise infant baptism and believer's baptism by immersion. We are happy to provide 'thanksgiving' for young children, and baptism by immersion for young people and adults, with 10 believers baptised in the last year. Many young people are choosing to renew their baptismal vows with immersion. We provide preparation for all those seeking baptism and for those wanting to be confirmed.





# Ministries

## at St John's

### Children's Ministry

This thriving ministry is overseen by our Children and families' Pastor. Each week, during the 10am service around 60 children are taught by enthusiastic and gifted volunteers.

With outreach events throughout the year, including a Light Party and Light Trail at Halloween, a Pancake Party at the start of Lent, and a children's Hour by the Cross on Good Friday, we attract families from inside and outside the church community.

Each December over 300 primary school children visit The Christmas Adventure, an interactive performance of the Christmas story. The summer Holiday Club provides an exciting means of reaching children beyond our own church families. We engage with local schools through Prayer Spaces and are keen to develop stronger links with this community.



## Youth Ministry (Year 7 to 13)

Our Youth Pastor organises lively and flourishing youth work. Around 50 young people meet each week at youth small groups for fun, fellowship and discipleship.

During the 10am Sunday morning service around 20 Pathfinders (school years 7-9) meet. Authentic Bible study (years 10-13) takes place each Sunday afternoon and is attended by 10-15 young people.

Each term Pathfinders and Authentic hold a worship event called Revolution.

The Friday Night Youth Club host monthly themed socials at church, culminating with the annual Christmas party, a hotly anticipated social event. In the Summer, there are BBQ parties.

Annual Youth weekends away are spent at a local outdoor activity centre. These combine worship, great teaching with a guest speaker and action-packed fun and games. A large group of youth and volunteers attend summer Christian conferences.



# Ministries

## at St John's



### Ministry for Older People

St John's has a wonderful thriving community of older people for whom we aim to give practical and spiritual support. Our Pastor for Older People leads this spiritual and pastoral ministry in the church and the parish. A monthly Thursday communion service was introduced some years ago and attracts many who are not regular church members.

This ministry has been a real growth area over the last few years with new people joining the strong core of longstanding older members of St John's. There is a real hunger for more of God within this congregation.

Faith Chat are a series of sessions where older people can meet and explore issues of life and faith. Pastoral visits provide support for older people.





# Ministries

## at St John's

### Students/18-30s

We are passionate about welcoming and supporting students and young adults at St Johns. We have close links with the local Universities and our team members will go in to campus and speak at the CUs, cater for large events on campus and run themed nights. At present we encourage students and young adults to integrate into the wider church family by joining home groups and serving in ministry areas. In the past we have had a thriving community of students which, for many reasons, we are seeing less of at the moment and recognise this is a potential area for growth.



### Married Couples

We hold a biblical, orthodox view of marriage and we value and support married couples at St John's. The Marriage Course is run at regular intervals. It is designed to help couples invest in their relationship and build a strong marriage.

### Single People

We want to support single people in our church family and ensure they feel valued and loved. Securely single is designed to help single Christians discuss the positives and challenges of single life and encourages all to be content in every and any circumstance. We ran this course for the first time in 2023.



### Men's Ministry

The church recently launched "Everyman", promoting activities encouraging men to deepen their personal faith and interaction with one another. The first initiative flowing from this has been a monthly get together in a local pub where friends are welcome as well. As relationships grow it is intended for other events to run alongside these with an emphasis on deepening personal spirituality.

### Women's Ministry

We aim to encourage women to grow in faith and relationships together, through social events to which non-church friends can be invited, and events with a discipleship focus.



# Ministries

## at St John's



### Small Group Ministries

As a large church with multiple congregations, small groups are our main vehicle to increase discipleship, deepen faith and grow together as a Christian family. They are also the primary source of pastoral care for one another. We would like to see more of our church family joining small groups. A dedicated Small Groups Pastor oversees 22 small groups, including:

### Weekly Home Groups

Home groups meet on a weekly or fortnightly basis, existing for teaching, learning, building relationships, serving one another and supporting each other through life. Some study notes on the sermon series, others choose their own studies. Some have a specific outward or international focus.

### Talk Together Groups

Talk Together are midweek women's small groups. Originally intended to support young mums with children, many groups have kept meeting even when their children have grown up. Some have creche facilities, allowing child-free time to meet, pray and support each other and study the bible.



### Women's Theology Group

This group meets to study the stories of women in the Bible and look at well-known stories from a woman's perspective.

### M-Net

We currently have two men's groups, with a similar purpose to home groups and Talk Together that exist for men to support other men in their Christian faith journey.



# Ministries

## at St John's

### Healing Prayer Centre

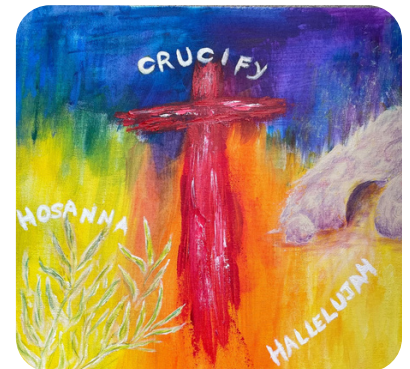
God is a loving Father who wants to see people healed. We offer personal prayer appointments at the Healing Prayer Centre at the Crossway. The Centre also organises the monthly Rest in God meetings, giving an opportunity to spend time in the Lord's presence, listening to Him.

### Prayer Meetings

The intercessory prayer group meets weekly, praying for regular events and the specific needs of people. The Celtic prayer group meets to pray using material produced by the Northumbria Community. Monthly prayer meetings include Powerhouse, Prayer for Work, and Prayer for Resurrection Church Beirut.

### Creative Art Ministry

The prophetic art group has an open table for people to join them during evening services. They listen to the Lord and prepare a visual interpretation of what He is saying to us. The group also meet regularly at other times and has facilitated children's prophetic art events.



## Other groups using St John's

In addition to our own Outreach and Bridge Building Ministries which are detailed on the next pages, we provide a space for other groups to meet, including but not limited to:

- Uniformed Guiding groups
- Local choral group
- Chinese Church Fellowship
- New Wine Leaders breakfast and New Wine evening celebrations
- Regional Minister group breakfasts

# Outreach

## and Mission

It is of utmost importance to us that we share the Good News of Jesus Christ with our local community. We have several outreach ministries that run at and through the church. We also support Mission Partners across the nation and the world.

### Toddlers

Toddlers is a thriving and energetic twice weekly gathering for babies, pre-school aged children (0-4 years) and their carers. It serves over a hundred families from many backgrounds and ethnicities. It is run by volunteers and overseen by our Toddler Pastor. It provides a safe and fun environment for children to play and for parents to make friends. Crafts and refreshments are provided.

A weekly Parent and Baby Group provides support and encouragement for carers and their little ones.



### FaithChat: Table Talk

Table Talk provides a weekly place for parents and grandparents to come together over a cup of tea and talk over important questions.



### Internationals

There are 10,000 international students at the universities in Birmingham and a number find their way to St John's. Some are already Christians; others use the opportunity of studying abroad to explore and find out about the Christian faith.

CAMEO - 'Come And Meet Each Other' is a weekly group for international wives and their children. We support the work of Friends International.

### Alpha and The Chosen Course

The church has run Alpha Courses over many years as a place for people to explore the Christian faith, however numbers attending have dropped off. More recently we have hosted an 8-week course based on The Chosen drama series to encourage reflection, discussion and explore the life of Christ.



### Debt Advice

Provided by the church and regulated by the Financial Conduct Authority, this provides free and impartial advice to those struggling with money issues.





# Bridge Building

## Ministries

The call and desire to build bridges into the community has been a prophetically received calling for St John's over the last 20 years. This was initiated with the opening of the Crossway.

**“Our desire is to build bridges into the community, enabling people to come into St John's and for St John's to go to them”**

Building for Mission “BfM” was launched by Rev Leonard Browne in 2017 as an ambitious project to develop St John's Church. The newly refurbished building was opened in September 2021, enabling more space both for St John's ministries and new bridge building initiatives. We sought the Lord's vision and four areas of outreach were identified:

Wellbeing  
Hospitality  
Social Justice and Transformation  
Creative Arts

Since then, the following Bridge Building ministries have developed:

### Friday night dinners:

Twice a month we prepare a meal with the Real Junk Food Project to provide food and fellowship for the local community, offered on a pay as you can afford basis.



### Warm Welcome:

This is an open, no strings attached invitation to everyone to come into church where we share refreshments, crafts, games and a good chat. We hope that together we experience something of the love and grace of God. Some visitors are already involved in church, most are not part of St John's family.

### ESOL:

Several church families offered their homes to Ukrainian refugees, and we identified the need for English language lessons. We now run these free lessons for beginners from a wide range of nationalities each week, supported by volunteers.



Continued on  
next page

# Bridge Building Ministries

## Celebrate Recovery Ministry:

Celebrate Recovery is a Christ-centred, Bible-based 12 step recovery programme designed to help people address a variety of hurts, hang-ups and habits. Supported by church volunteers, this group meets on a weekly basis.



## Mental Health First Aid:

Several staff and one of the church wardens have been trained as mental health first aiders, with a plan to roll out this training more widely.

## Saturday Community Café:

A twice monthly Community Café on Saturday mornings offering a warm welcome, friendship, tea and cakes! A committed team of skilled volunteers run a Repair Café offering help to fix broken home items. This has proven to be a popular service to the community. The Debt Advice team also attend Café mornings to provide financial advice to those in need.



## Care Home Support:

Field House Care Home has been visited several times by a team from St John's, including the Pastor for Older People, to provide pastoral care and support to the staff who work there. There is a hope to extend this support service within the parish.



## Resource Days:

These provide food and supplies to local charities through food bank/baby bank donations, and coat collections.



# Global Mission

## GPS (Global Partner Support)

St John's has a long history of sending and supporting those called to mission, be it locally or overseas. We have a heart for the nations and want to share God's love and care, as well as His saving power. We are committed to supporting the work of God in the UK and globally. We support long and short-term mission partners through prayer, fellowship and funding.

We support those who are called to short term projects such as gap years or summer holiday programmes. We support 21 long term partners who work within the city of Birmingham, the UK and further afield; from South Africa, Pakistan, Lebanon, Peru and West Africa. 9 of these mission partners are overseas, and 12 within the UK. We have a particular relationship with Resurrection Church Beirut (RCB).

A significant proportion of the church's income supports our GPS partners and ministries.



# St Mary's Bearwood

## Church Revitalisation Project



Over the years, St John's has been involved in church planting and revitalising. Our most recent calling was the revitalisation of St Mary's Church, Bearwood. St Mary's was a church which had a small, faithful community, with a prominent position on the High Street in Bearwood (a neighbouring suburb). In September 2022, the Rev'd Ben Baker took a team of around 30 individuals, called from our church family, to join the congregation of St Mary's. Ben was supported prayerfully and financially in this process. Although sad to see our friends leave us, we have rejoiced in the amazing growth we have seen at St. Mary's.

We remain open to further church planting and revitalisation projects, trusting in the Lord to lead us.

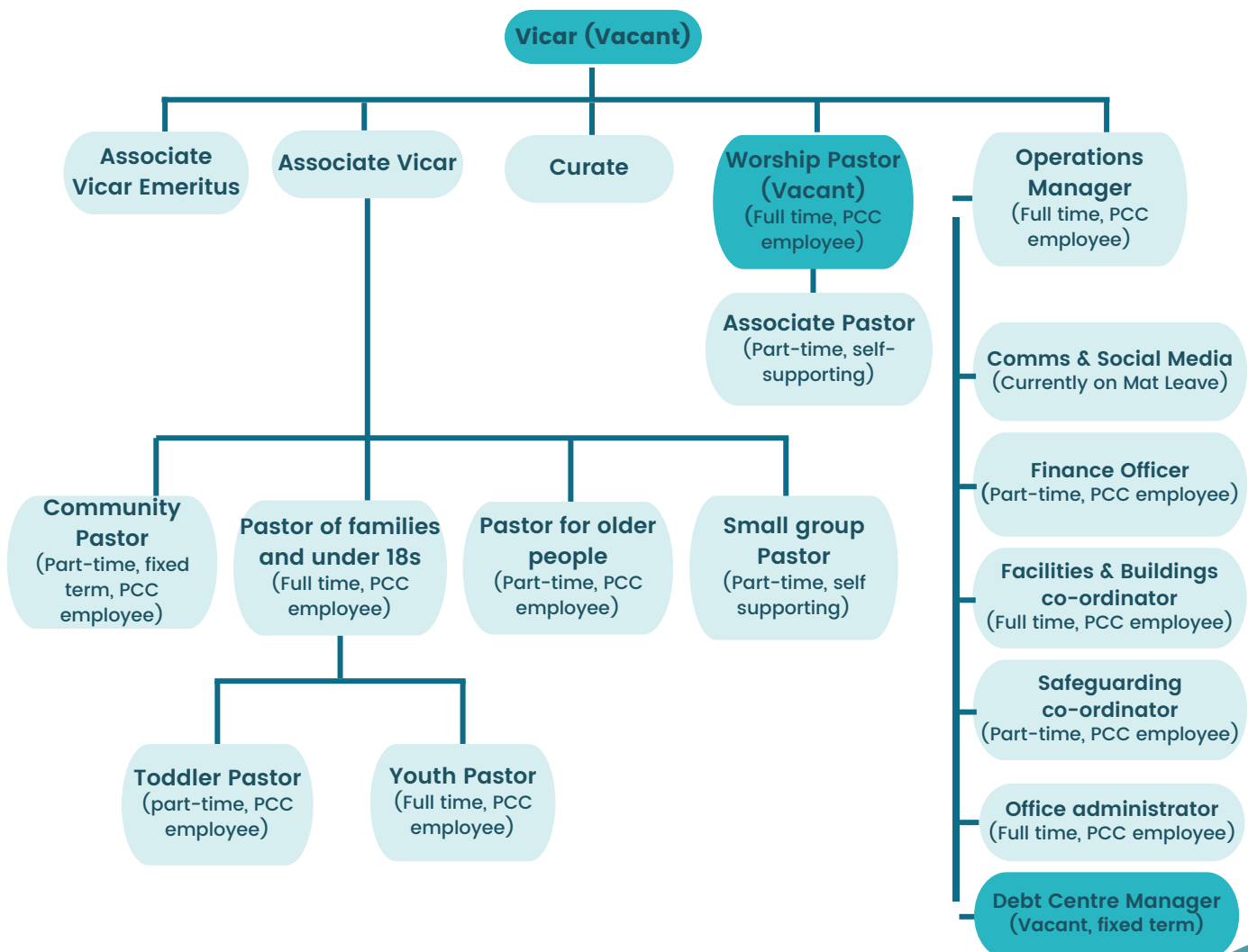
# Staff Team

## Our Clergy and Staff Team Structure

We are thoroughly blessed with a dedicated, gifted and hard-working Staff Team. Together, they serve the spiritual, pastoral and operational needs of the whole church family.

### The Staff Team

- St John's has a Staff Team of 19 people (3 currently vacant). Twelve of these are employed by the PCC, two are self-supporting and three are members of the Clergy.
- The current St John's Clergy team consists of a Vicar, an Associate Vicar and Curate together with an Associate Vicar Emeritus.
- We currently have a female curate. We wholly endorse the position of women in leadership.
- There are two PCC-employed vacant positions: worship pastor, whom we are actively recruiting, and a debt centre manager post.





# Meet the Team

## Clergy



**Rev'd Jon  
Tattersall**  
Associate Vicar

I've been in this role since 2019, previously serving as youth pastor at St John's, having been away for training and serving my curacy. My passion is encouraging, enabling and equipping people to be with Jesus, to be like Jesus and to do the things that Jesus did. I love sports, films and am fanatical about Lord of the Rings.



**Rev'd Antony  
Spencer**  
Associate Vicar  
Emeritus

Pat and I came to St John's in 2007. Formerly a Quantity Surveyor and vicar in Suffolk I came on a 4 year contract as Director of Pastoral Development. I was appointed Associate Vicar in 2011 and served as Interim Vicar from 2014-2016. I retired in 2018 but continue to support leadership as an adviser, pastoral supporter, and in preaching and leading.



**Rev'd Jo  
Jennings**  
Curate

I've been curate at St John's for almost two years, I arrived in June 2022 after completing my theological training at Trinity College, Bristol. I am involved in all sorts of ministries as well as regularly leading and preaching at our weekly gatherings. I am married with two children who also worship at St John's. In the last few years, I have developed a love for watching women's football and try to get to Aston Villa women's games as much as I can. I also enjoy spending time with family and friends and like to read and watch films.



# Meet the Team

## Pastoral Team



**Catriona Foster**  
Pastor for  
older people

I began my role in 2007 and my passion is the spiritual care of older people – to help people to flourish in later life. It is a privilege to both serve in a church which recognises the value of resourcing this area of ministry, and to be part of the team at St John's. I network with people involved in similar roles both locally and nationally and have been able to share my experience to train others. Outside of work, I love the outdoors – walking and gardening, and all things Scottish, especially the Hebridean Islands.



**Diana Hopkins**  
Children and  
families pastor

I have been Children & Families Pastor for 7 years and have been worshipping here for around 20 years. It's a privilege to journey alongside our children and families on their faith journeys and I am so grateful that St. John's is a church committed to investing in children and young people. I love the arts and creativity both in worship and for fun and I can usually be found with a cup of tea in my hand, looking for a warm spot!



**Henry Frankel**  
Youth  
pastor

I love videogames, ancient history docuseries/period dramas and getting out to explore the great outdoors. I am also deeply passionate about Jesus, seeing young people encounter him and live life to the fullest in the knowledge that Jesus loves them.



**Kate Diwakar**  
Toddler  
pastor

I enjoy being with my friends and meeting new people. I like little children, nurturing young families, and introducing them to God, so I have the best job in the world! I love spending time with my family, being creative, writing and walking in the countryside.



**Nathan Burden**  
Community  
pastor

A keen chess player and lover of a good cup of coffee, I am happiest when in deep conversation about Jesus. I enjoy campfires, camping, star gazing and messing around with my three children. One of the great joys of my life is in seeing young people grow in their faith and understand the truth of the good news for themselves. In recent years, the Lord has placed an increasing burden (no pun intended) on my heart to restore broken people to wholeness in Him, and I am grateful for the opportunity to work with both the community of St John's and the wider community to carry out this calling.



**Caroline Richards**  
Associate pastor  
(worship)

I've been a member of St John's for nearly 20 years and joined the staff team in 2022. Alongside my Assistant Pastor role, I work at the University of Birmingham as an Academic and Clinical Psychologist. I am a huge fan of the musical 'Hamilton' and spends much of my free time trying to learn all the lines, word for word!



**Hannah Reed**  
Small groups  
pastor

I have recently taken on the Small Groups Pastor's role at St John's. I'm married to James and have three children. I also work as an Academic at the University of Birmingham.

Small groups are so important for large churches to build friendship and fellowship, for sharing across generations and helping people in their spiritual growth and discipleship.



# Meet the Team

## Operations Team



**Catherine White**  
Operations  
Manager

I've been the Operations Manager for just over a year. I'm so thankful to be part of a great team, providing practical solutions to church life gained from experience from a wide range of workplaces, primarily the finance and charity sectors. I'm also carer for my wonderful disabled daughter, sports mum, dog walker and run very slowly when I have time, and been known to crochet during zoom calls!



**Ruth Bio**  
Safeguarding  
coordinator

I am one of the newest members of staff and really enjoying being a part of this amazing team and navigating this new season within the Church. I have always worked in care and social care settings, gaining a Social Work degree along the way, and I have a real heart for supporting people and challenging injustice. I have two little girls who keep me busy and remind me of the joy in small things. I think my friends would call me thoughtful, kind and creative.



**Ed Justa**  
Buildings and  
facilities  
coordinator

I look after the wonderful facilities here and making sure everything is in place for all our users and groups. I have been at St John's roughly 6 months now and have loved having the opportunity to learn and grow every day and be part of such an amazing and welcoming staff team and wider church family! I live in Great Barr and am involved in my local church. I love music and play guitar with a couple of groups as well as singing with a community choir. In my free time I enjoy spending time with family and friends, good food and getting out into the countryside and seeing new places.



**Jo Herlock**  
Office  
administrator

I joined St John's as the office administrator in January 2022. I love this role as you never know what to expect and each week is completely different! On my days off, you'll find me spending time with my grandchildren, singing with various groups and choirs, or watching K dramas and Nollywood films.



**Wendy Rigby**  
Finance  
officer

Apart from food & drink, wordsearch, reading, travelling, I like to find at least one thing to laugh about every day



**Emma Orton**  
Comms,  
media and  
design lead

I'm currently on maternity leave after having my wonderful baby boy in June 2023. I love using my creative talents to share church family news.



# Church Buildings



## The Church

The Church was built and consecrated on its current site in 1960. The main worship area has always had a simple design allowing for growth and adaptability. In total, the large, carpeted area and balcony can accommodate approximately 350 worshippers.

Following a major building project launched in 2017, the church reopened its doors in 2021. The “Building for Mission” programme was fully financed through the sacrificial giving of the church family and the sale of houses owned by the PCC. This accessible building now offers several warm, comfortable, flexible spaces of various capacities for worship, children’s groups, and Bridge Building ministries, and has commercial catering standard kitchens. There is limited on-site car parking and roadside parking in the immediate vicinity is restricted. Several staff have their offices in the church building.

The church buildings are used extensively throughout the week.

## The Vicarage, 99 Wentworth Road

The Vicarage is in a pleasant residential area, half a mile from the church. It is a detached two storey property with a converted attic. It has five bedrooms, a bathroom, a shower room, kitchen and three reception rooms, one of which is suitable for use as a study. There are two downstairs toilets. The study can be accessed easily for meetings as it is close to the front door. The property is well decorated and maintained.

Outside the property is a single garage. Off-street parking is available for three cars. There is additional on-street parking in Wentworth Road. The property has mature gardens and the back garden, which has a large lawn and established borders, is enclosed on all sides. The property was occupied throughout the previous incumbency and is being temporarily rented out by the diocese during the vacancy period.





## Other Church

# Buildings

## The Crossway

Located on the same road as the Church, it was purchased by the PCC in 2008 and is held in trust by the diocese. It is an Edwardian 'V' shaped end of terrace house which has been converted into office space for our debt and benefits advice ministries and our Healing Prayer Centre. It contains a reception area, a toilet with washing facilities, a kitchenette, several small meeting rooms and a larger meeting room upstairs.



## 2 Milford Copse

Owned by the PCC and held in trust by the Diocese, 2 Milford Copse is a 4 bedroom detached property and is situated in a quiet residential area, less than a mile from the Church. It is home for the Associate Vicar and their family.

## 5a Greenfield Road

This detached building provides office space for most of the operations team and some clergy and is privately leased. This is a few minutes walk away from the church.



# Safeguarding

## at St John's

Every person is a precious child of God. In Him we have a responsibility to care for the people who come to church. It is of primary importance to us that St John's is a place of safety for all – but particularly for the many children, young people and vulnerable adults that we welcome on a weekly basis. The PCC is committed to building a safe culture by combining good relationships and communication at all levels, clear safeguarding accountability and rigorous safeguarding policies, as required by the House of Bishops.

Safeguarding provision is delivered through a team approach. Our team currently comprises two Parish Safeguarding Officers, who are volunteers, and a Parish Safeguarding Coordinator, who is employed by the PCC. They work with our senior clergy to provide all the necessary safeguarding support, and ensure advice and guidance relating to children, young people and vulnerable adults at St John's Church is adhered to. They will liaise with the Diocesan Safeguarding Advisor and Statutory agencies as appropriate.

Our Parish Safeguarding Coordinator ensure that DBS checks, training and safer recruitment procedures are applied and kept up to date for clergy, paid staff and all those who volunteer with children, young people and vulnerable adults. Safeguarding is a standing item on the weekly staff meeting agenda (subject to the requirements of confidentiality) and an agenda item on every PCC meeting. Display boards in church identify key policies, contact information for outside agencies and identify those with key safeguarding responsibilities in church. The Parish Safeguarding Dashboard is monitored regularly and identifies the next steps we need to take to improve our safeguarding practice.



Helen Baines and  
Dave Atkins - Parish  
Safeguarding  
Officers



# Governance

## and the PCC

The Parochial Church Council (PCC) is comprised of fifteen elected lay members, five Deanery Synod representatives and the two church wardens. Two of the Deanery Synod representatives may also serve on Diocesan Synod. Recently, the PCC has been chaired by the Vice-Chair rather than the incumbent. The PCC meets on a bimonthly basis to pray, review ministry areas and conduct formal business. The clergy and Operations Manager attend PCC meetings.

The Standing Committee supports the work of the PCC and meets between PCC meetings to transact business on its behalf. It comprises the Associate Vicar, Curate, Associate Vicar Emeritus, Church Wardens, Church Treasurer, PCC Secretary and the Vice-Chair. The Operations Manager also attends.

The PCC has several sub-committees which carry out detailed work of review, policy formulation and financial planning, presenting reports and recommendations to the PCC for approval. They include PCC members and members of the congregation with particular expertise. PCC sub-committees are Standing Committee, Human Resources, GPS, Safeguarding and Eco Group.

We recognise our responsibility to care for God's amazing creation. We are an Eco Church as we have been awarded a Bronze A Rocha Eco Church Award and are working towards Silver.



What is

# God's calling for

St John's?



# Church Engagement

## 2024

The whole church community from young to old were asked to pray, and then engage in a variety of ways to contribute feedback about what they felt God was saying to them at this time.

### What our kids and youth like about St John's



### What our young people want from church



\*A strong theme of love for food and biscuits was at the heart of most of the children's answers. We hope you will share in that love...



# Church Engagement

## 2024

### What do we value most?

Part of the church engagement was a survey opened to the whole church family. We asked what people valued most about St John's, and this word cloud summarises the responses:



The top three responses for what people valued about St John's were:

- 1) That they felt part of a family/community
- 2) Great Bible teaching
- 3) Childrens and youth work

For further information about the results from the 2024 church survey please see Appendix C.

# Church Engagement

## What might our future look like?

We asked people to pray and consider God's vision for St John's in the future. These key themes were prayerfully discerned from both prayer meetings and survey feedback:



- **Word, Spirit and Mission:** We are blessed with great preaching of the word. We hope in the next season to grow our reliance on the work of the Spirit, and from this mission will flow.
- **Evangelism:** To reach out to the community to bring people to salvation in Christ.
- **Discipleship:** To nurture and develop deeper a faith in both older Christians and those new to faith.
- **Community:** To use our strong sense of community, to be welcoming and loving people from all backgrounds and stages of faith.
- **Spiritual Renewal and Empowerment:** For deeper and more empowering encounters with the Holy Spirit, leading to renewal and transformation. Outpouring of spiritual gifts among members.
- **Outward Focus and Social Action:** The church being a light (or salt and light/beacon/lighthouse) in the community. Serving others with love, compassion, and humility. To engage in social action, address local needs, and support projects that benefit disadvantaged communities in Harborne and further afield. Bringing healing and restoration to the lost and broken not by becoming more like the world, but by offering a better alternative.
- **Biblical Teaching and Faithfulness:** A church that provides sound biblical teaching and is faithful to God's word. To follow Jesus' example in how we relate to each other and the world.
- **Leadership and Vision:** A church led by a truly Godly person who can discern God's plan in this place for us, and who leads with love and humility. Someone who prioritises God's vision over ours.
- **Mission and Global Impact:** A church that is part of God's project to renew all things (including the environment), with a mission to spread the gospel locally and globally. To be a beacon of light and hope, impacting not only the local community but also the wider world. (Which links to **Outward Focus and Social Action.**)

We believe that these are significant themes that will shape our direction as a church for the next season, and we look forward to pressing into these with our new Incumbent.



# Personal Profile

## of our new Vicar

**We are looking for an Incumbent who believes they have heard a clear call from the Lord, to come and serve here at St John's.**

With prayerful consideration we are looking for someone who is:

### Godly

whose life reflects a deep commitment to the Lord. A person of integrity and good moral character

### Prayerful

who understands the power of prayer and encourages the prayer life of the church

### Spirit-filled

who has experienced the renewing and empowering work of the Holy Spirit and encourages others to grow in the gifts of the Spirit

### Rooted in scripture

with good biblical knowledge and teaching abilities; who demonstrates commitment to the authority of scripture

### Gifted in leadership

and can articulate a clear vision and inspire others to follow. Someone who can shepherd a congregation and manage a staff team of talented and gifted people

### Pastoral

and is approachable, compassionate, loving and caring. A leader who can provide emotional support and guidance to members of the church family

### Compassionate to the lost

who has a heart for outreach and evangelism. A person who will encourage others to reach out into our local community, Birmingham and the Nations

### Encouraging of discipleship

within the church family from the youngest to the oldest

We recognise that one person cannot display every God-given skill, talent and spiritual gift. We believe in every member ministry at St John's. We are looking for someone who can draw out giftings in others, and delegate responsibilities to them.

# Summary



Thank you for taking the time to read our profile

stjohnsharborne

“A Heart for God, our City and the Nations”

We pray that as you have read this profile, God has ignited a flame in you, inspiring you to apply for this role here at St John's. We believe this profile reflects where we currently are as a Church and what our heart is as a family. We will honour, support and pray for you and we eagerly look forward to the next steps of God's plan for us together.

The Church Wardens

For an informal conversation about this post please contact the Patron's representative, Paul Darlington:

paul.darlington@churchsociety.org  
07814 599281

For an application form please contact:  
patronage@churchsociety.org



For more information about St John's Harborne please visit our website at: <https://www.stjohnsharborne.org>

St John's Harborne  
High St  
Harborne  
Birmingham  
B17 9PT

0121 427 4601

hello@stjohnsharborne.org

sjh



# Appendices



## Church

# Finance

We are blessed at St John's with a committed and generous church family, who give their time and money. This has allowed us to support ministries within the church, mission locally and overseas and, more recently, fund "Building for Mission". We teach on the importance of giving as part of our worship to the Lord.

At times giving has been sacrificial. With the St Mary's Bearwood revitalisation project, we 'gave away' talented members of our congregation and lost their financial gifts. This, combined with the effects of the Pandemic has impacted our finances.

## Finance team

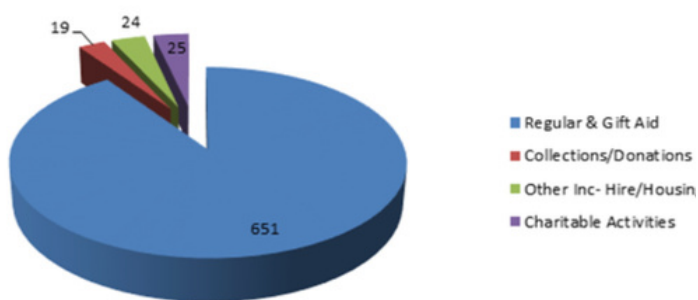
The PCC treasurer works with a team of volunteers to manage the finances. Finance reports and management accounts are prepared by the Treasurer to present to the PCC for discussion and approval three times a year, with ad hoc reports when required.

A detailed budget for the following year is presented to the PCC in November/January for approval. This budget is broken down across a number of ministries, each one has a ministry lead who manages that specific budget. Any significant variations to that budget are flagged in advance to Standing Committee/PCC. This ensures the careful management of the finances of the Church.

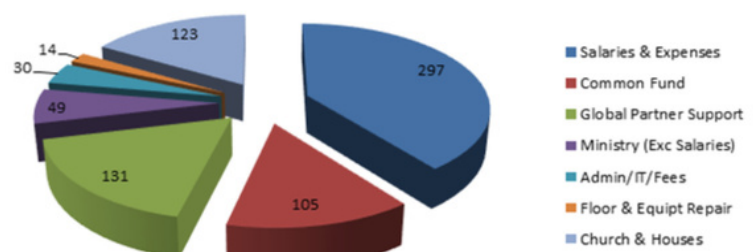
## Giving and costs for 2023

Giving to the church comes in a variety of forms. Most people give by regular bank transfers and the associated gift aid is significant, we also use both open plate collections and electronic giving. Legacies are becoming increasingly important. Each October we hold our financial appeal, encouraging people to pray and review their giving.

**Income 2023 £719K**



**Costs 2023 £749k**





## Church

# Finance

continued...

In 2023 the General Fund, which is the main account used for day to day running costs and excludes restricted and designated funds, showed a deficit of £30K. This was reduced to £18k with a transfer of £12k from a designated fund to partly cover the exceptional cost of floor and equipment repairs.

The overall financial position at the end of the last financial year (December 2023) which includes the General Fund, restricted funds and designated funds, showed a deficit of £32k before revaluation of assets/investments of £18k which reduced the deficit to £14k.

The bank balance was £437k, net current assets of £461k plus assets (properties) of £1,056K (fair value) giving a total value of the registered charity of £1,517k.

## Budget 2024

The budget for 2024 is still impacted by the changes in giving mentioned previously and there is an overall deficit for the year of circa £40K. However, it is expected that the final figure will be nearer to break even and, if necessary, funds will be transferred to hold the figure at no more than £20k. The plan is to move back to break even by the end of 2024.

## Clergy and Staff Expenses

Clergy and staff expenses are included within the annual costs of the Church General Fund. Our expenses policy allows for appropriate expenditure to be reimbursed for activities of the church and to support the provision of hospitality. The incumbent is expected to make full use of the clergy HLC scheme which is run in partnership with HM Revenue and Customs. It covers heating, lighting, cleaning and garden upkeep costs.

The salary will be the Birmingham Diocesan stipend. Expenses of office and contribution to the cost of home working will be paid by the parish as allowed by the Charity Commission.

# A History of St John's

1858	Founded as a new parish with an evangelical focus in 1858, as an alternative to increasing liberal teaching and introduction of a robed choir at the Parish Church St Peter's. The church drew a congregation from the surrounding area, with people walking many miles to attend. The church was known for its strong Bible teaching, spiritual fervour, discipleship (Bible study groups), mission to young people (Boys Brigade, Sunday School and St John's CofE school) and evangelistic mission locally and support of overseas mission.
1941	Original church building bombed and destroyed at Easter 1941 during WW2.
1940-50s	Meetings continued at the Memorial Hall. Fundraising begins for a new building.
1949	Revd Canon William Leatham appointed vicar. Inspired by the East African Revival, the church was known for Bible teaching, freedom in worship and vibrant spiritual life, a desire to reach out to students. Canon Bill Leatham has vision for a new building in a new location on the site of the Memorial Hall. Many called to mission locally and globally.
1960	Dedication of the new church building on a site in the High Street. New building was built without loans or debt. The Church Society became Patron.
1970	Revd. Canon Tom Walker appointed vicar, bringing a focus on evangelism, worship, the charismatic renewal and every member ministry. It was also a fruitful time of sending mission partners abroad.
1970-80s	Freedom in worship, greater use of gifts of the Holy Spirit, Powerful presence of God and a desire to seek and listen to God, all built on the Biblical foundations previously laid. Open to God meetings attracting people from further afield Greater use of the Creative Arts in Worship (music, dance, drama and banners).
1983	St John's curate and 40 church members moved to St Germain's, Edgbaston, a church facing a redundancy order, to bring new life to the church.
1985	Growing need for more accommodation led to the building of the 'Upper Room'.
1992	Revd Canon John Hughes appointed vicar. John's heart was for building up the church, concern for the local community, and for healing and reconciliation.
1990-2010	Continued growth in charismatic renewal and engagement with New Wine.
2001	Associate vicar Revd Geoff Lanham and 40 church members planted a 'church without walls' B1, based in Broad Street, the main nightclub area of Birmingham.
2002	Refurbishment of the main church including removal of the pews to give greater flexibility for activities in the sanctuary area.
2008	'The Crossway' established to be a base for ministry to the local community.
2010	Revd Nigel di Castiglione appointed vicar.
2014	Following a listening exercise conducted by Revd. Dr Russ Parker, Revd Nigel di Castiglione stood down from active ministry at St John's.
2016	Revd Leonard Browne appointed vicar.
2017	Commencement of 'Building for Mission' to raise funds for new church building.
2021	Completed building project without loans or debt. Returned to the new church building during pandemic restrictions.
2023	Church Revitalisation of St Mary's Bearwood.
2021-24	Developing Bridge-Building Ministries to Reach out into the community.
2024	Revd Leonard Browne retires.

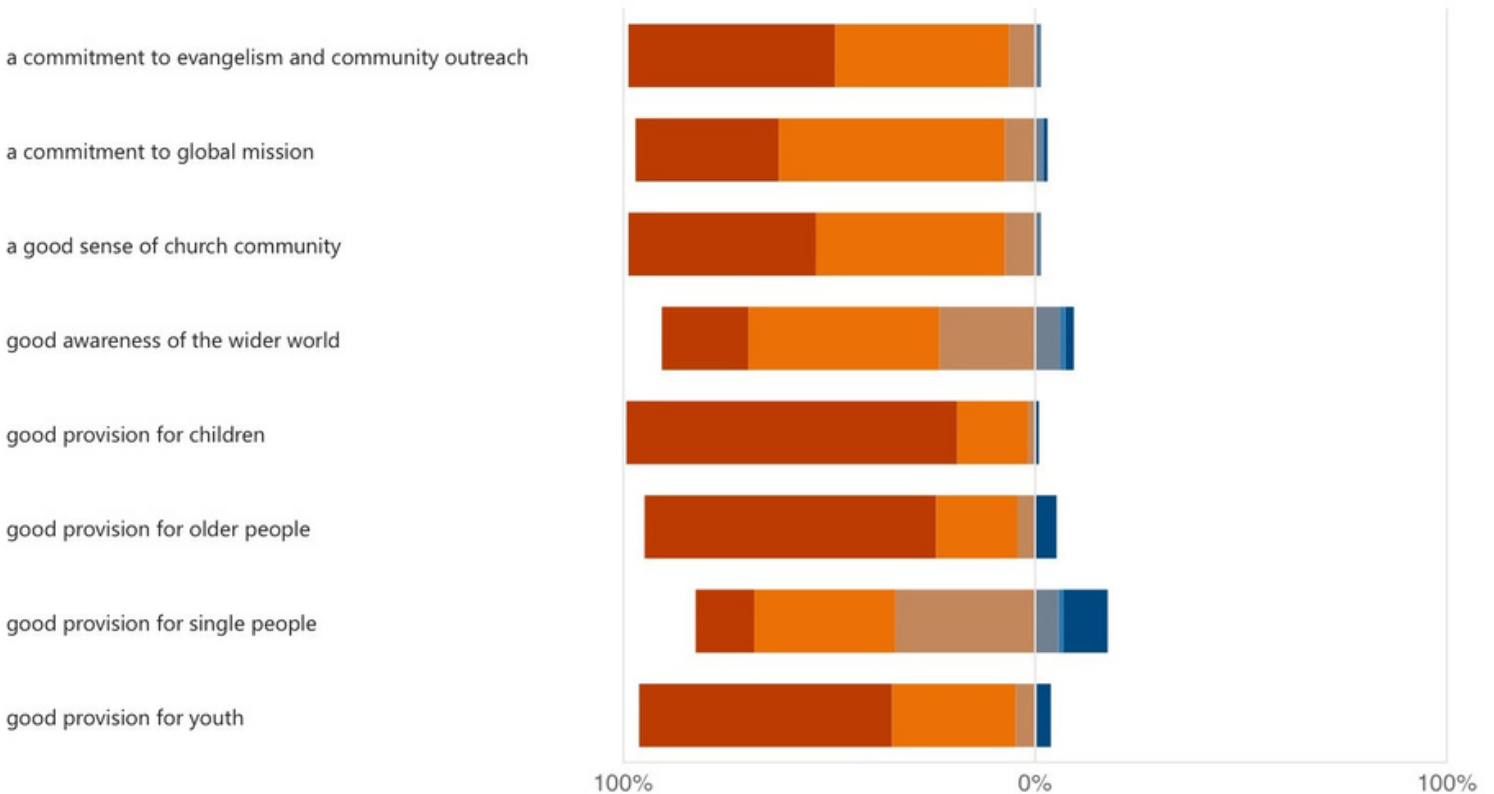


# Our Survey 2024

## What is going well?

Our church family were asked to what extent they agreed with statements about how St John's is doing in certain areas:

■ Strongly agree  
 ■ Agree  
 ■ Neither agree nor disagree  
 ■ Disagree  
 ■ Strongly disagree  
 ■ Don't know



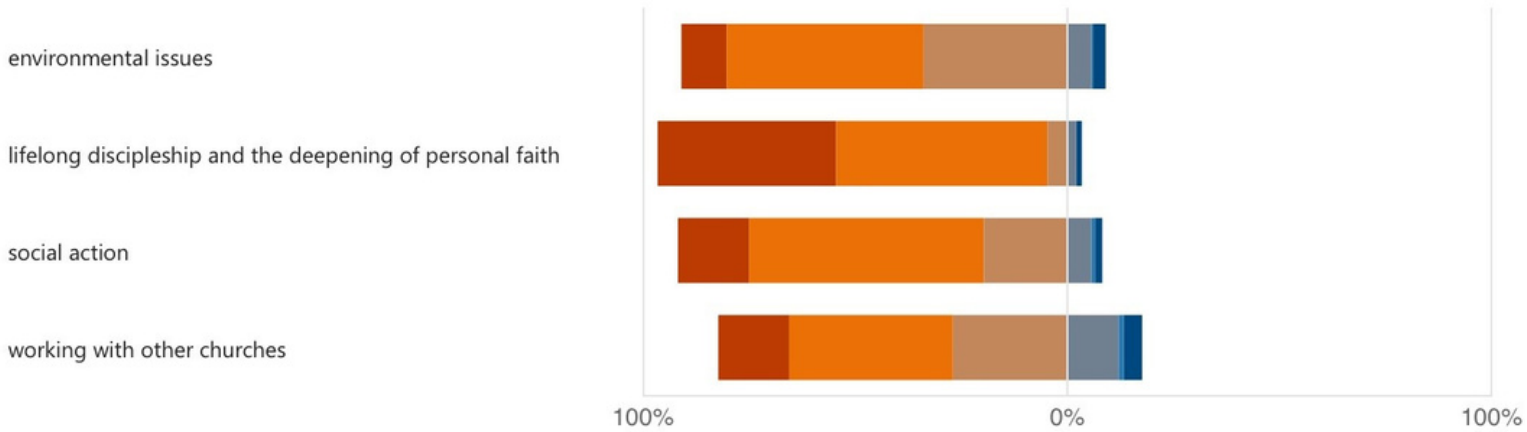
# Our Survey

## What is going well?

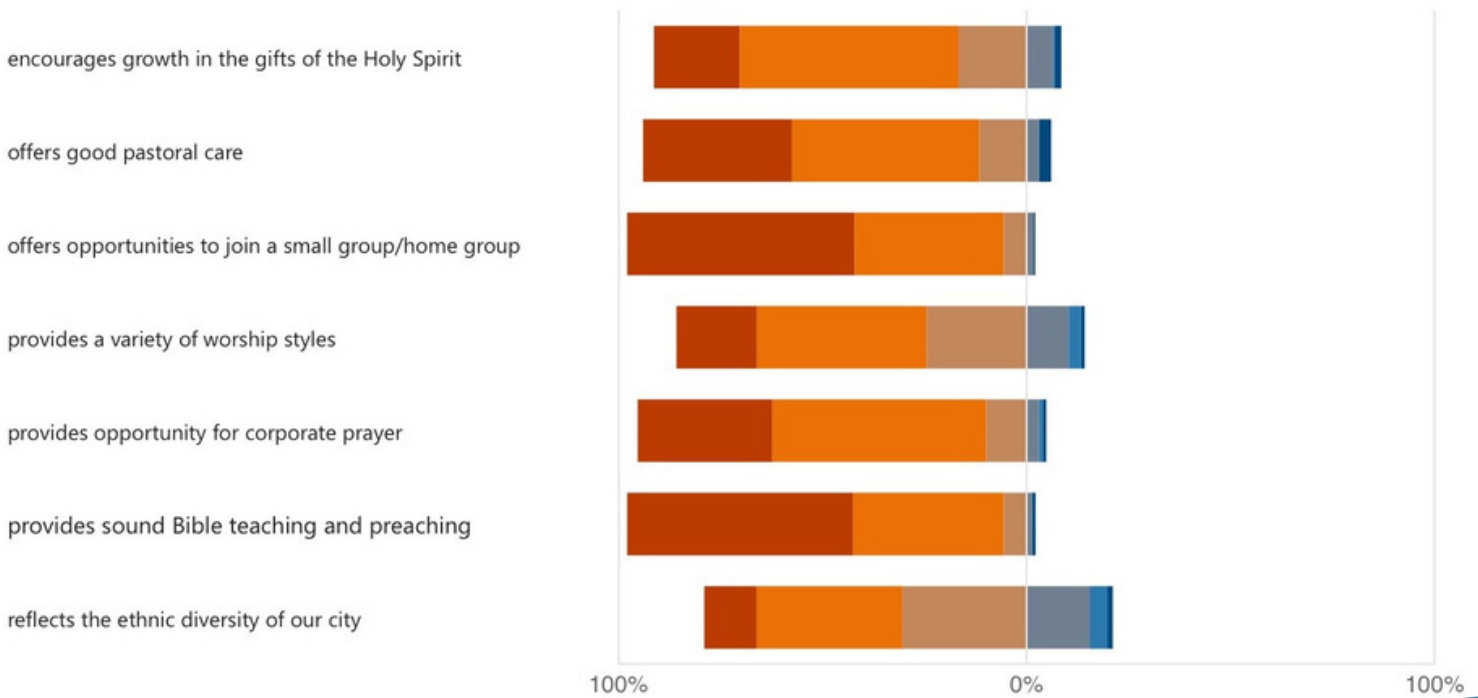
Continued...

Our church family were asked to what extent they agreed with statements about how St John's is doing in certain areas:

Strongly agree Agree Neither agree nor disagree Disagree Strongly disagree Don't know



Strongly agree Agree Neither agree nor disagree Disagree Strongly disagree Don't know





# Our Survey

## What could we be doing better?

Using our survey data we have highlighted the areas in which we are less strong and could, with God's help, grow in:

Commitment to  
environmental issues

Reflecting the ethnic  
diversity of the City

Encouraging growth  
in the gifts of the  
Holy Spirit

Provision for single  
people

Variety of worship  
styles



Commitment to  
social action

Working with  
other churches